

# Watts Marine Applications

**Innovation, Quality, Reliability**

Four brands, one single solution for your next marine or offshore project



**BLÜCHER**<sup>®</sup>  
A WATTS Brand

**bar**  
A WATTS Brand

 **valpes**  
A WATTS Brand

**SOCCLA**  
A WATTS Brand

**WATTS**<sup>®</sup>

## One Complete System

The BLÜCHER product range comprises three main product groups – BLÜCHER® Pipes, Drains and Channels. Our long-lasting sanitary discharge system has been installed in over 3,500 vessels worldwide. By choosing BLÜCHER marine, you will be offered one system and one set of approvals, all from one supplier.

The BLÜCHER stainless steel push-fit drainage system is lightweight, fast, easy to install, non-combustible, shock- and vibration-tested, and fully fire-approved.

The system benefits the overall project and is very price-competitive compared to plastic and galvanized steel. Making BLÜCHER marine the ideal solution for owners, designers, installers, yards and other relevant stakeholders.

## BLÜCHER® Drain Marine

have been developed in conjunction with leading shipyards worldwide. As a result, the product offering meets the specific demands of each individual installation regardless of the deck construction. BLÜCHER® Marine drains are suitable for welding in the deck and some for non-welded installation, can be fitted with a removable water trap (providing full rodding access from above) and are available to suit any deck finish.

- Direct welding of stainless steel into aluminium
- One drainage solution
- Complete standard system
- For all vessels

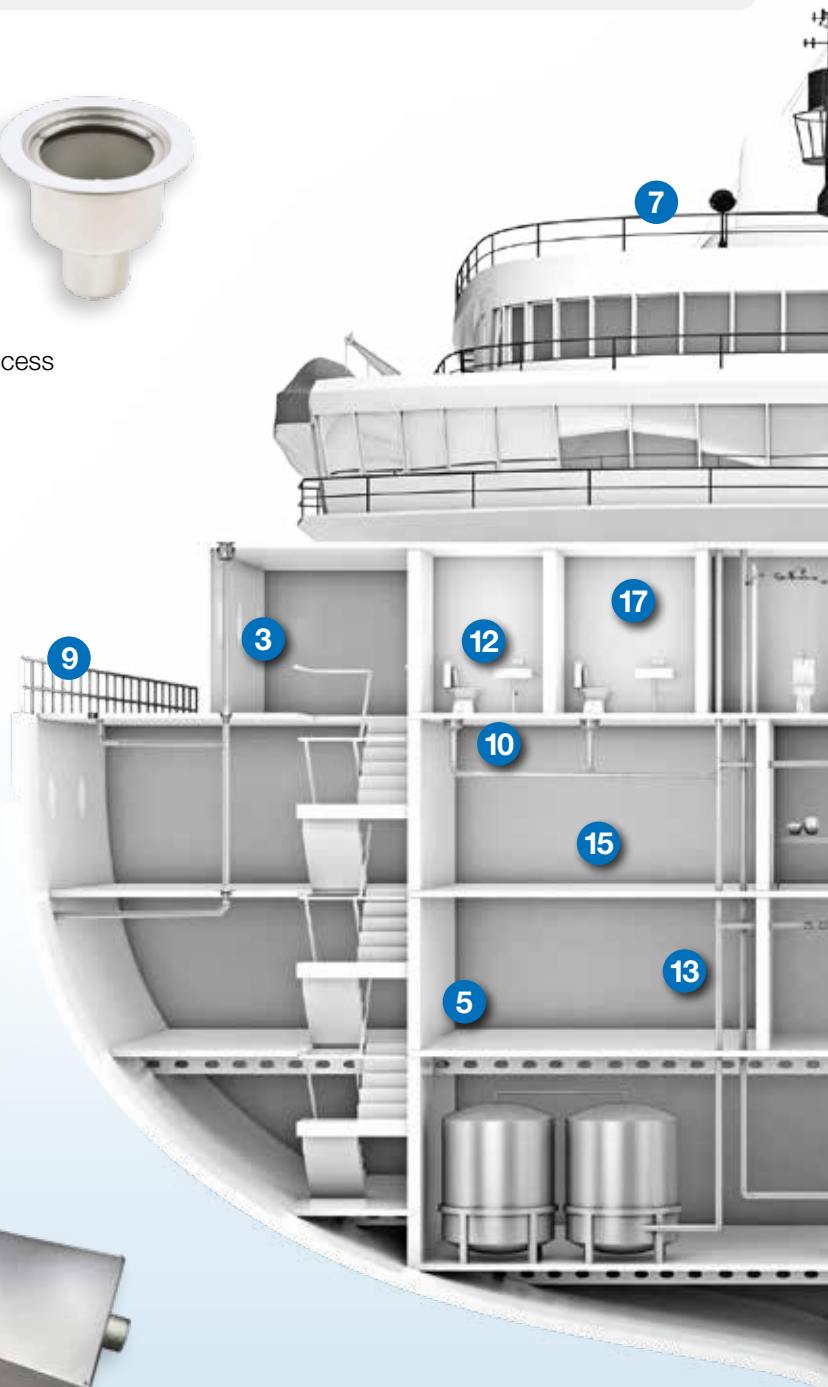
### Selected Applications

- 9 Balconies
- 10 Cabin areas
- 11 Galley areas
- 12 Shower drains
- 13 Public areas

## BLÜCHER® Grease Separator

19 In catering, restaurants, food-processing etc. the proper function of the grease separator depends mainly on the amount of fat residue and very little on the flow volume, therefore sizing according to EN 1825-2 standard, where the number of meals served per day, will provide the most accurate sizing.

- Stainless steel has a smooth surface, which is easy to clean.
- Easy connection into the BLÜCHER® lightweight drainage pipework.
- Fire resistant
- 100% recyclable



## BLÜCHER® EuroPipe



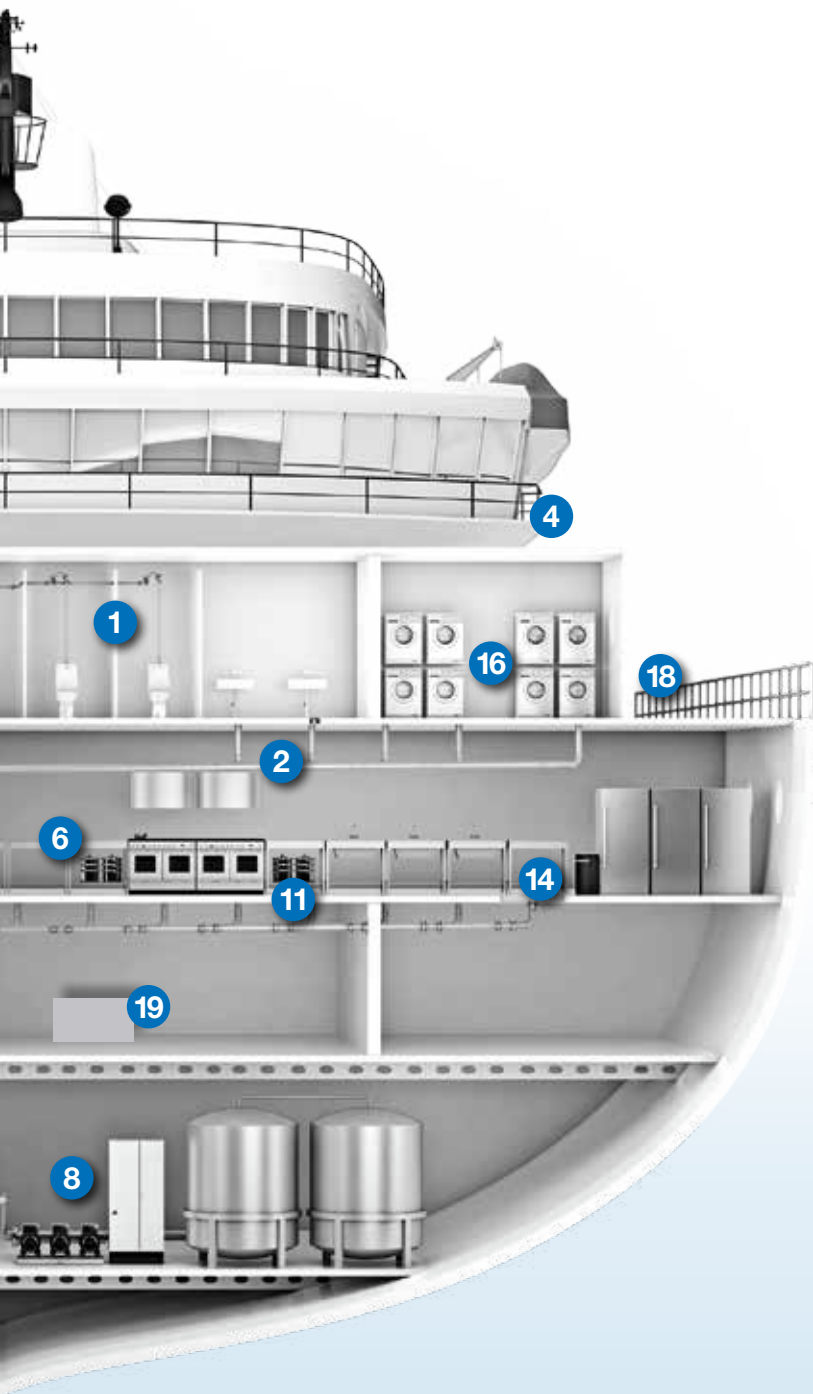
A complete stainless steel sanitary pipework system approved for installation in ships. It is the natural choice of the shipbuilding industry when looking for safe and low-maintenance solutions.

The push-fit joint is completely interchangeable between either gravity or vacuum discharge systems. In addition to sanitary discharge it is also suitable for central vacuum cleaning systems, garbage disposal systems, etc. The benefits of being able to use the same pipework system throughout the vessel, regardless of the type of system employed, can offer significant installation savings.

- Light-weight
- Non-combustible
- Easy to install

### Selected Applications

- 1 Black water – vacuum & gravity
- 2 Grey water
- 3 Deck drain piping
- 4 Outside / balcony piping
- 5 Central vacuum cleaning system (CVC)
- 6 Food waste system
- 7 Ventilation pipes
- 8 Drainage piping for engine rooms



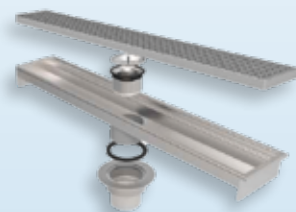
## BLÜCHER® Channel

Stainless steel drainage channels are modular deck drainage solutions for use in galleys, pantries, door openings, outside deck areas, etc. Drainage channels are available to suit all deck finishes with a range of gratings developed to suit the varying load-bearing and flow demands. Outlets are available with a removable water trap and where applicable a filter basket to prevent solids discharging into the drainage system. Customised components are available on request.

- All in stainless steel
- Modular system for numerous possible combinations
- Multi-adjustable
- Excellent hygiene and self-cleansing properties
- Exceptional flow
- Wide range of gratings

### Selected Applications

- 14 Galley areas / pantries
- 15 Corridors
- 16 Laundry
- 17 Shower areas
- 18 Deck drainage



bar and Valpes have been designing, developing, and delivering complex actuator solutions and accessories to offshore and shipbuilding customers for many years.

Our DNV certified products include electric and pneumatic actuators, positioners and limit switch boxes for use in all offshore and shipbuilding areas, and are a perfect partner to our SOCLA fluid control solutions.

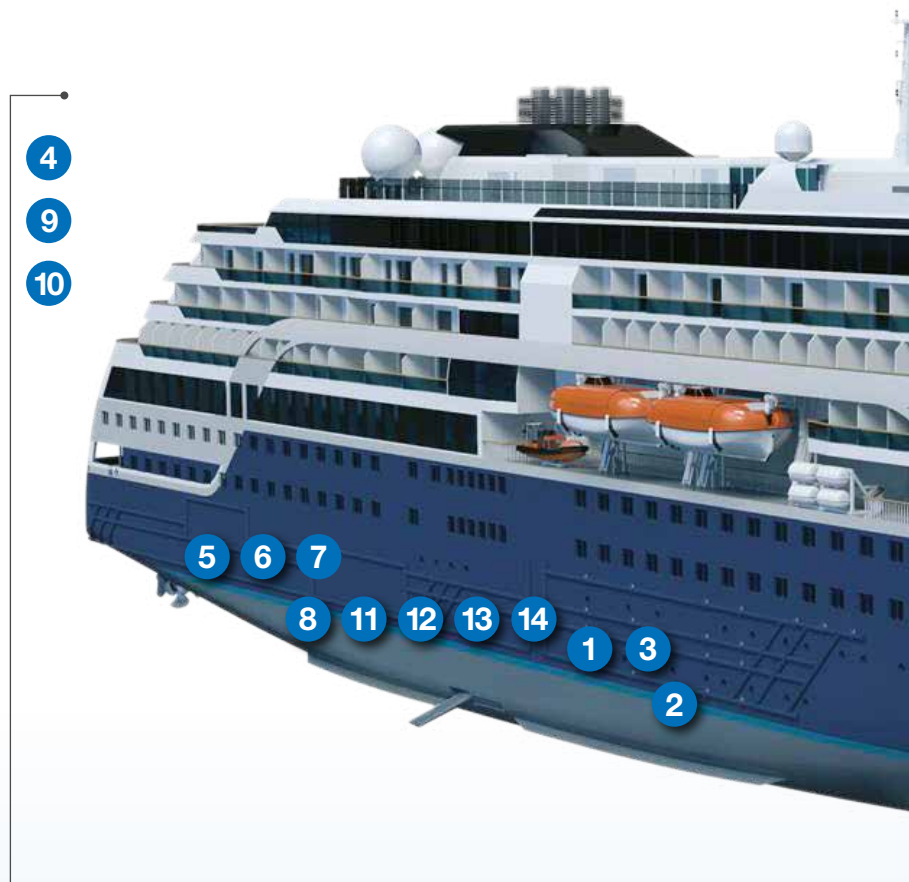
Our expert teams regularly work with commercial, passenger and naval vessel customers and our products are commonly used on vessels or in offshore applications.

Our key certifications:



### Selected Applications

- ① Water Treatment
- ② Ballast Systems
- ③ Grease separators
- ④ HVAC
- ⑤ Vacuum Collection
- ⑥ Dry and wet waste treatment
- ⑦ Fresh Water Generation
- ⑧ Waste Heat Recovery Systems
- ⑨ Bilge Systems
- ⑩ Fire Protection
- ⑪ Engines
- ⑫ Fuel Management / storage tanks
- ⑬ Cooling Systems
- ⑭ Engine Room / Boilers



### Valpes Electric Actuators - model DV

Designed for shipbuilding, our electric actuators have DNV-GL compliance as Systems and components and control and monitoring systems—type-approved DNV-GL0339 for 50.000 cycles or a three-year warranty.

Our DV actuators are suitable for naval, commercial and special-purpose ships in topside and hull applications and auxiliary systems. They can also be used in on or offshore applications such as platforms or harbours.

These electric actuators optimise the workspace without compromising functionality with their compact

design, overall dimension and their capability for inclined upside-down installations.

State-of-the-art control and communication systems such as Modbus-RTU, Bluetooth® and the AXMART® interface and BBPR battery backup complete a reliable and robust system, facilitating smooth data exchange and monitoring through designated software and from any control post. ATEX and SCHOCK-approved options are also available.



# Electric Actuators



**bar**  
A WATTS Brand

## bar Actubar - Pneumatic Actuators

The actubar is the intelligently equipped generation of our pneumatic quarter-turn actuators. Externally unmistakable and technically unique, the actubar offers completely new advantages that can be used for flexible adaptations to specific plant which results in higher production efficiency. Actubar is DNV certified for offshore and shipbuilding vessels. It can be used for applications in specific systems such as:

- Lubricating grease processing
- Fuel processing
- Cooling systems on ships
- Energy recuperation
- Bilge systems
- Firefighting systems
- Ballast water distribution
- Drinking water treatment
- Hot water treatment
- Wastewater Treatment

For the application of our actubar actuators in seawater atmospheres such as on ships, in harbours or near lakes as well as in offshore applications, we offer a coating with a system 6A certified according to NORSOK M-501. The actuators are sandblasted in the assembled state and coated with a 3-layer coating system consisting of primer, intermediate layer, and top layer (finish).



Founded on a legacy of more than 70 years of unwavering expertise, SOCLA stands as a prominent global developer, manufacturer, and distributor specialising in automatic and actuated fluid control solutions. Our extensive knowledge and commitment to excellence position us as leading authorities in the water and fluid control industry.

You'll find our cutting-edge products seamlessly integrated into the plumbing systems of commercial vessels, mega yachts, passenger ships, and navy ships worldwide. Particularly renowned are our butterfly and non-return valves, often designated for installation in critical and hazardous ship piping systems, serving vital roles in shipside valves, anti-heeling mechanisms, ballasting operations, fuel oil systems, and firefighting setups.

Using our SOCLA expertise and a commitment to exceptional customer service, we craft bespoke solutions for marine applications. Our team can incorporate certified coatings for marine environments, enhancing standard products to ensure economical and effective solutions. Examples of applications include fuel management, drinking water systems, and refrigerated seawater systems.

Our products focus on four key areas:

- 1 Protection
- 2 Non-Return
- 3 Regulation
- 4 Closure

Our key certifications:



BUREAU  
VERITAS

Shaping a World of Trust



## Closure

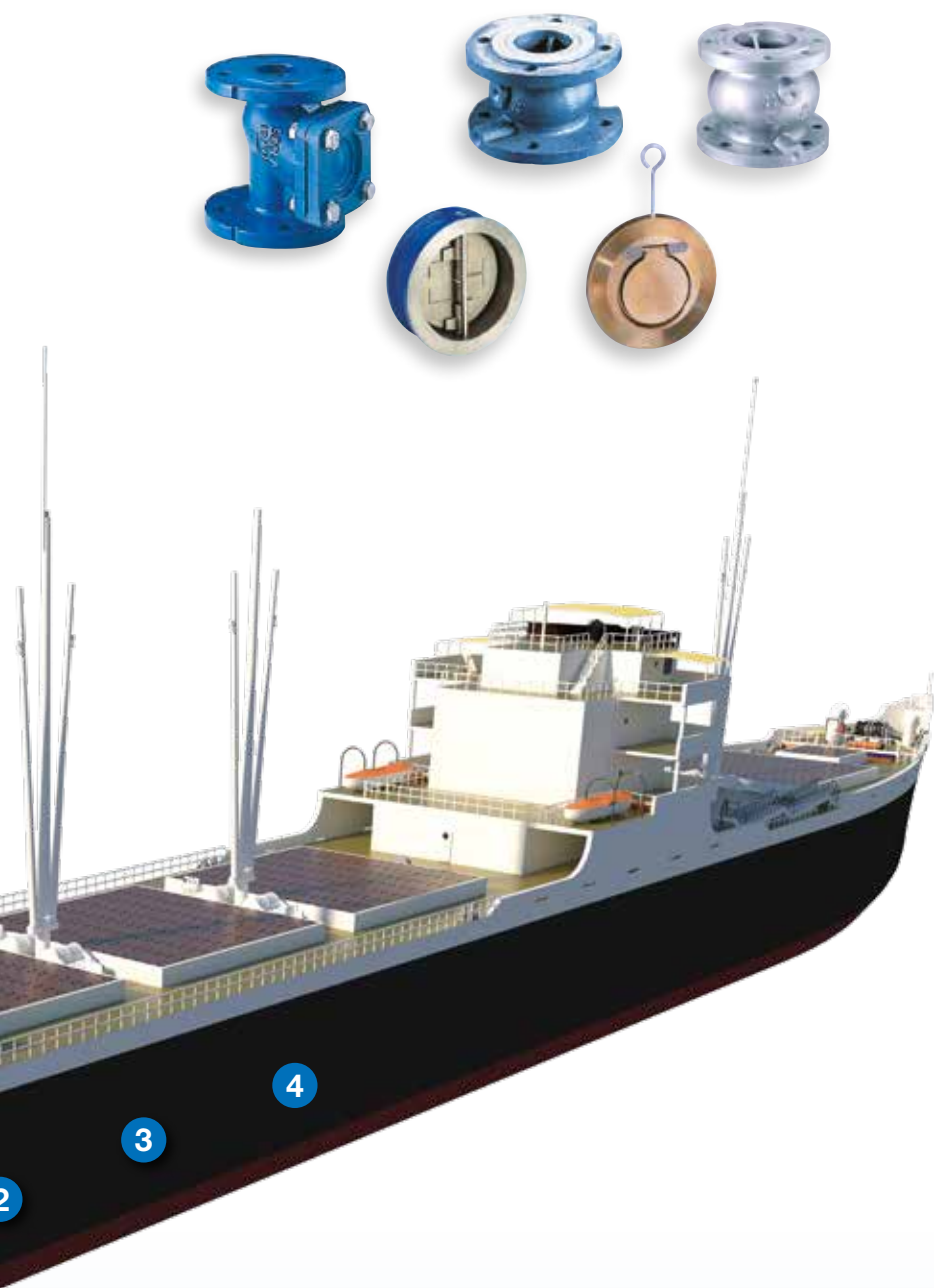
SOCLA's butterfly valves, tailored for water pipelines, general domestic or industrial circuits, and specialised industries like chemicals, pharmaceuticals, and nuclear sectors, epitomise precision and reliability.

Noteworthy products include Sylax butterfly valves from DN32 up to DN1200.

Sylax is fabricated from Marine-approved bodies in ductile iron, steel or stainless steel; with Alu-Bronze or stainless steel discs and EPDM, Nitrile or FKM liners to guarantee compatibility with fluids (eg. drinking water, seawater, HVAC, fuel, lubrication).

Sylax is available with wafer, lug and double flanges pipe connection types.





## Protection

Backflow preventers and systems to protect drinking water networks from the backflow of unsafe water. Notably, our BA2860, BA4760, and CA2096 backflow preventers, in conjunction with filters, pressure reducer valves, ball valves, and expansion joints, offer robust solutions for large vessels such as cruise ships.



## Non-Return

SOCLA takes pride in presenting an unparalleled range of check valves spanning from 15 to 800mm, featuring 16 closure systems. These valves cater to a wide spectrum of applications, from domestic water and wastewater to food-safe and industrial fluid systems. Our check valves, including double plate CV, swing CV, ball CV, 402 CV, 302X CV, 696V, and 405 non-return valves, are suitable for various marine applications.

Our 402X check valve is commonly used in frigates or in submarine applications.



## Regulation

Our products in this category include control valves, pressure reducers, air release valves, and water hammer arrestors meticulously designed to regulate or diminish pressure, air, and water levels within drinking water pipelines.



## Product Range Overview

Our products are defined by reliability, innovation, and durability, all crafted to ensure optimal performance and safety on the open seas and supported by our extensive marine experience. Our knowledgeable marine specialists support our customers every step of the way to find the right solutions for their needs, all from a single supply source.

Designed to be durable and cope with marine environments, we offer products that successfully deliver:

- Water ballast systems
- Fire suppression
- Freshwater and wastewater
- HVAC
- Bilge and drainage
- Engine room operations
- Fuel management
- Sanitary drainage systems

Our comprehensive range of marine-grade products is designed to meet the diverse and rigorous needs of the maritime industry. From container ships to tanks to passenger ships and ferries to military vessels, we offer high-quality solutions, including DNV certified products, tailored specifically for the demanding environments of the marine sector.



**A WATTS Brand**

Founded in Denmark in 1965, BLÜCHER has developed into a leading manufacturer of stainless-steel drainage systems. Today, BLÜCHER is an international company with subsidiaries and representations worldwide.

**[www.blucher.com](http://www.blucher.com)**



**A WATTS Brand**



**A WATTS Brand**

Since 1979, bar GmbH has been involved in the development, production and worldwide distribution of pneumatic rotary actuators and accessories. Valpes SAS has been developing and manufacturing quarter-turn electric actuators for over 30 years. Both companies specialise in the development of customised and unique solutions for a variety of valve automation applications.

**[www.bar-gmbh.de](http://www.bar-gmbh.de) [www.valpes.com](http://www.valpes.com)**



**A WATTS Brand**

SOCLA is a global developer, manufacturer, and distributor of specialist automatic and actuated fluid control solutions. We have our own network of distributor subsidiaries in some of the world's largest markets.

**[www.socla.com](http://www.socla.com)**



The descriptions and photographs contained in this document are supplied by way of example and illustration only. Watts Industries reserves the right to carry out any technical and design improvements to its products without prior notice. Watts hereby objects to any term, different from or additional to Watts terms, contained in any buyer communication in any form, unless agreed to in a writing signed by an officer of Watts.